



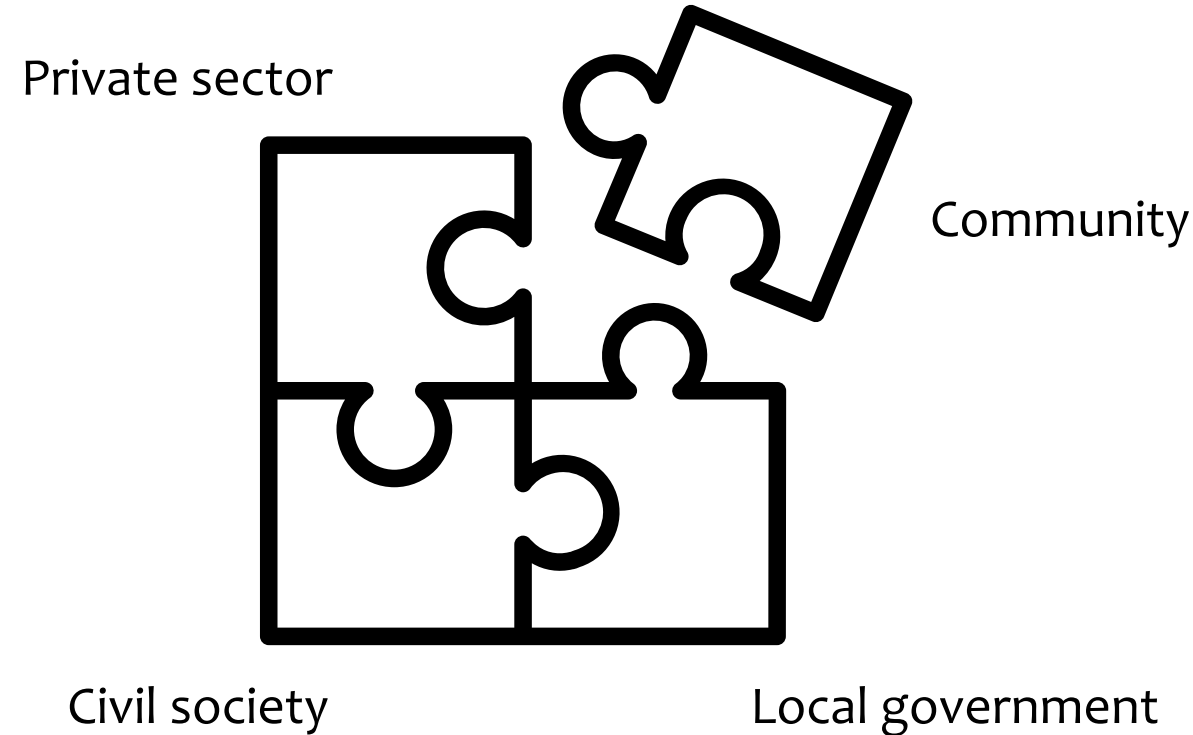
# SMART CITY JUST CITY

Creating people-  
centered and gender-  
sensitive smart cities

VISION	MECHANISM	OUTCOME
<p data-bbox="389 401 690 472"><b><u>Just City</u></b></p> <p data-bbox="282 551 792 958">a city that is inclusive, safe, resilient, &amp; sustainable</p>	<p data-bbox="1065 401 1561 572"><b><u>SMART TECHNOLOGY</u></b></p> <p data-bbox="1009 644 1620 1058">Technology, data, private-public sector collaboration</p>	<p data-bbox="1816 401 2283 572"><b><u>SMART, JUST CITY</u></b></p> <p data-bbox="1816 644 2283 1058">Efficient, integrated, inclusive, &amp; equitable city</p>

# How do we make this work for everyone?

1. Intention: Mechanism to support policies that advance equity and inclusion
2. Engagement: Input and participation of multiple and diverse urban stakeholders
3. Impact: Assess and measure access, use, benefit for all residents



## Smart City Just City asks:

- Who benefits from the technology?
- Is this making our city more inclusive, resilient, sustainable, and safer for all?





## Just city Vision

Shelter for unhoused populations during winter



## Smart city mechanism

Smart kiosks



## Smart City Just City Outcome

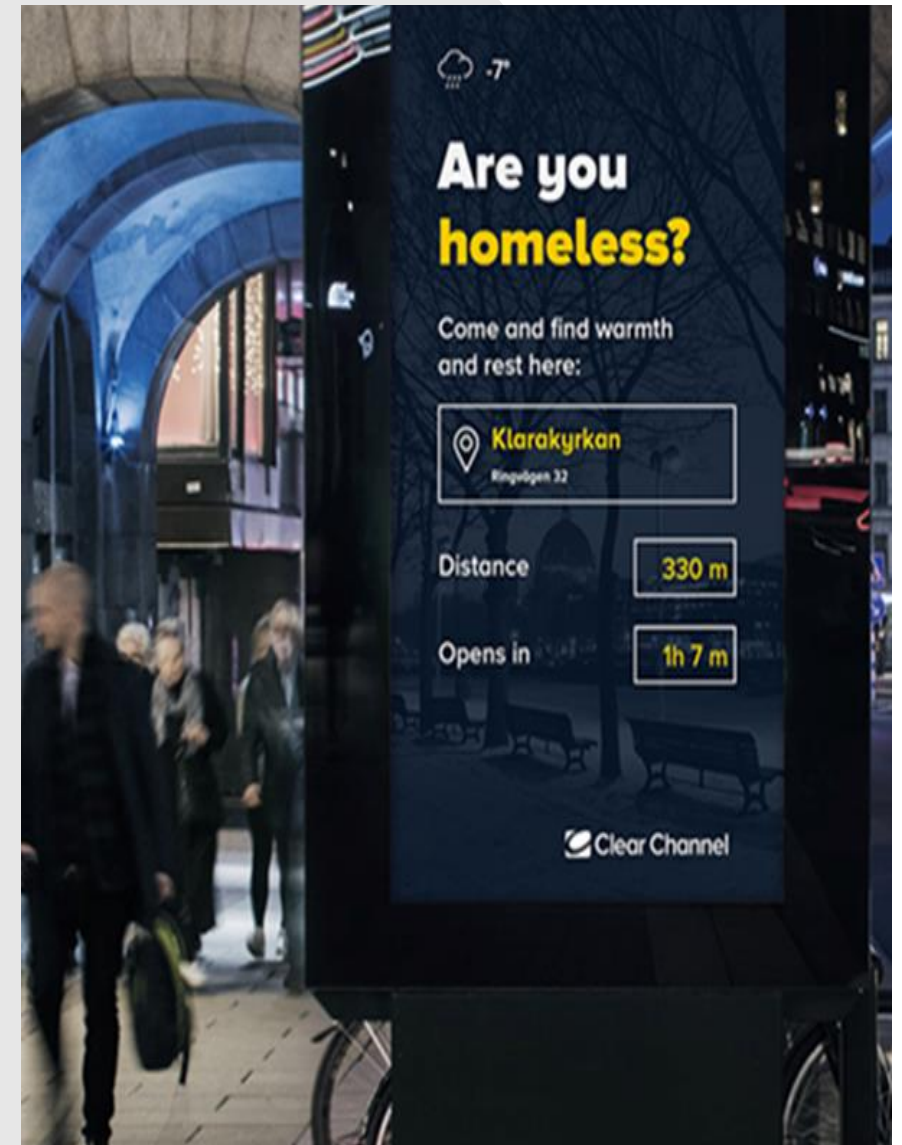


Image: Clear Channel



## Impact Assessment: Access, Use, Benefit

*Andrew Burton/Getty Images*

- Can they use it?
- Will they use it?
- Why not?

# SCJC Assessment



Goal	Tool	Outcome	Access	Use	Benefit	Obstacles
Connect women to health services	Smart kiosks	Improved health outcomes for women	Yes	No	No	Infrastructure Lighting

**Conclusion:** A smart city plan in the city of Baltimore must be part of and integrated with a more expansive vision to upgrade the city based on participatory planning.

**TARGET**

**5>B**



**PROMOTE  
EMPOWERMENT OF  
WOMEN THROUGH  
TECHNOLOGY**



**Thank you!**

[www.ihcglobal.org](http://www.ihcglobal.org)

[www.twitter.com/IHC\\_Global](https://www.twitter.com/IHC_Global)

---

Natalie R. Gill

[ngill@ihcglobal.org](mailto:ngill@ihcglobal.org)